



Transitioning from PathTrak 4.x to XPERTrak 1.0

How To Accomplish Most Common Tasks



Transitioning From PathTrak to XPERTrak

- **Objectives:**

- Show how to access most commonly used PathTrak features in XPERTrak
- Briefly explain some key new XPERTrak capabilities

- **Desired Outcome:**

- PathTrak users perform major tasks with no learning curve-induced delays
 - And achieve significant efficiency gains after transition period

- **Next Steps:**

- More detailed user training material/videos to follow

Most Common Functions - How Do I:

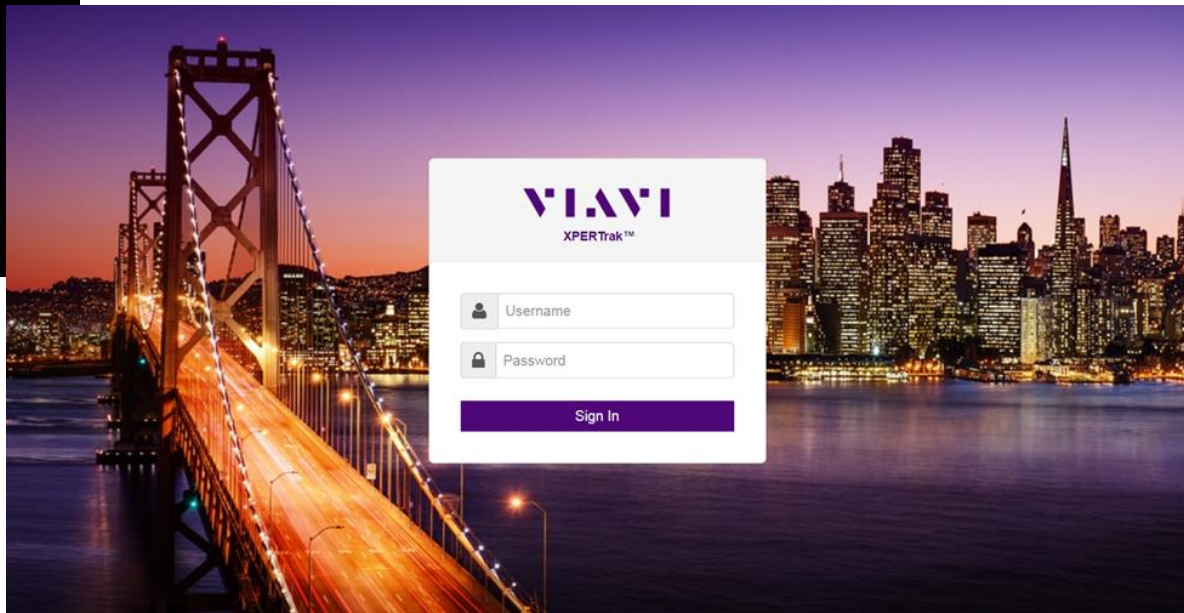
- [Find/Select a Node/Port/MAC Address](#)
- [Launch Live Spectrum Analyzer/QAMTrak Analyzer](#) (PC, Mobile)
- [Put a Node Into Broadcast](#) (2:50 into video)
- View Alarms [Dashboard](#) (2:15 into video)
- View Spectral/MACTrak Performance Monitoring History [Part 1](#), [Part 2](#)
- [View Node Ranking List](#) (1:30 into video)
- Access PNM (Upstream Pre-Eq, Downstream Monitor) [Part 1](#), [Part 2](#)
- [Basic System Admin](#)

XPERTrak 1.0 Is a Big Change From PathTrak 4.5

- [New Login Page](#)



- **You Can Do Everything In XPERTrak That You Could In PathTrak (And Much More!)**
- Navigation and UI Are Just Different



New Landing Page

■ [New Landing Page](#)

VIAMI PathTrak™ Return Path Monitoring System Welcome Eric Barnes Configure Features Help

Monitoring Health Properties

Alarms Event Log Reports Broadcast Monitoring Plan MACTrak™ Availability UCD

Alarms from Selected Element: Critical Major Minor Warning Clear All Alarms Locate Source

Severity	Time	Event	Source	Acknowledge Required	Alarm ID
Critical	Tue Jun 20 2017 09:20:46 AM	Violation - vypadek nodu	PHA 9 59 Klemenova, Developer "Y" i, modem Bmp Bzenicka 1	Yes	20047975
Critical	Tue Jun 20 2017 04:41:34 AM	Communications FAILURE	LTM LT000-metal J.E.Parkyn 9186e	No	20040967
Major	Tue Jun 20 2017 09:21:42 AM	Violation - kritické rusení	KAR KA KAROS Ve Svahu 786 #a	Yes	20048065
Minor	Tue Jun 20 2017 09:35:37 AM	Violation - veľké rusení	PHA 9 47 Prazochelova 2432/29 #e	Yes	20048265
Minor	Tue Jun 20 2017 09:21:39 AM	Violation - veľké rusení	LTM LT000-metal J.E.Parkyn 9186e	Yes	20048063
Minor	Tue Jun 20 2017 09:20:54 AM	Violation - veľké rusení	SLA SLA 00A #a	Yes	20047995
Warning	Tue Jun 20 2017 09:36:30 AM	Violation - male rusení	PHA 21 1.11 Trebošadicka 107716 #a	Yes	20048305
Warning	Tue Jun 20 2017 09:36:28 AM	Violation - male rusení	PHA 24 1.5 Nevanova 107531 #e	Yes	20048304
Warning	Tue Jun 20 2017 09:36:28 AM	Violation - male rusení	BRN BCP BRCP008 #e	Yes	20048302
Warning	Tue Jun 20 2017 09:36:27 AM	Violation - male rusení	CEL CL16 Prazska	Yes	20048300

Print... Export to CSV... Updated: Tue Jun 20 2017 09:36:27 AM

VIAMI XPERTrak™

Start typing a node, port or modem MAC

Daily Node Health

Good: 15
Bad: 1

Current Node Health

Good: 13
Bad: 1

Churn Priority Table

Daily Node Health Showing 14 of 16 rows

Node	▲ Score	Impacted Subscri...	History
Node 123-SIG	64	5	
RPM 1 Port 6	94	-	
RPM 1 Port 7	94	-	
RPM 1 Port 4	95	-	
RPM 1 Port 3	95	-	

Alarms Summary

Total: 16
Critical: 8
Major: 1
Minor: 5
Good: 2

Alarms

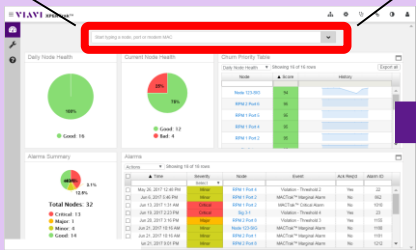
Showing 5 of 5 rows

Actions	▲ Time	Severity	Node	Event	Ack Req'd	Alarm ID
<input type="checkbox"/>	Jul 18, 2017 6:18 PM	Critical	Sig 3-1	Violation - Threshold 4.x	Yes	2675
<input type="checkbox"/>	Jul 18, 2017 6:18 PM	Warning	Sig 3-1	Violation - Threshold 1.1	Yes	2674
<input type="checkbox"/>	Jul 18, 2017 6:18 PM	Major	Sig 3-1	Violation - Threshold 3.x	Yes	2673
<input type="checkbox"/>	Jul 18, 2017 6:18 PM	Minor	Sig 3-1	Violation - Threshold 2.x	Yes	2672
<input type="checkbox"/>	Jul 18, 2017 6:18 PM	Major	RPM 2 Port 8	Violation - Threshold 3.x	Yes	1155

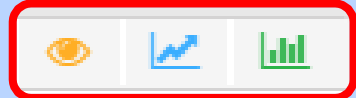
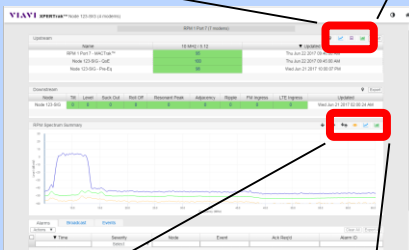
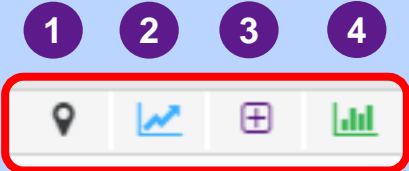
How To Access Popular Per-Node/Port Displays

Start Typing Name Here
(XPERTrak will autocomplete)
Click On Node Name To Select

Start typing a node, port or modem MAC



Select Desired Display



1 PNM Views



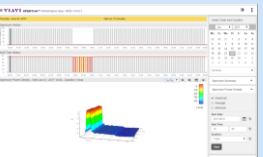
2 CMTS Spectrum



3 QAMTrak Analyzer



4 Performance History



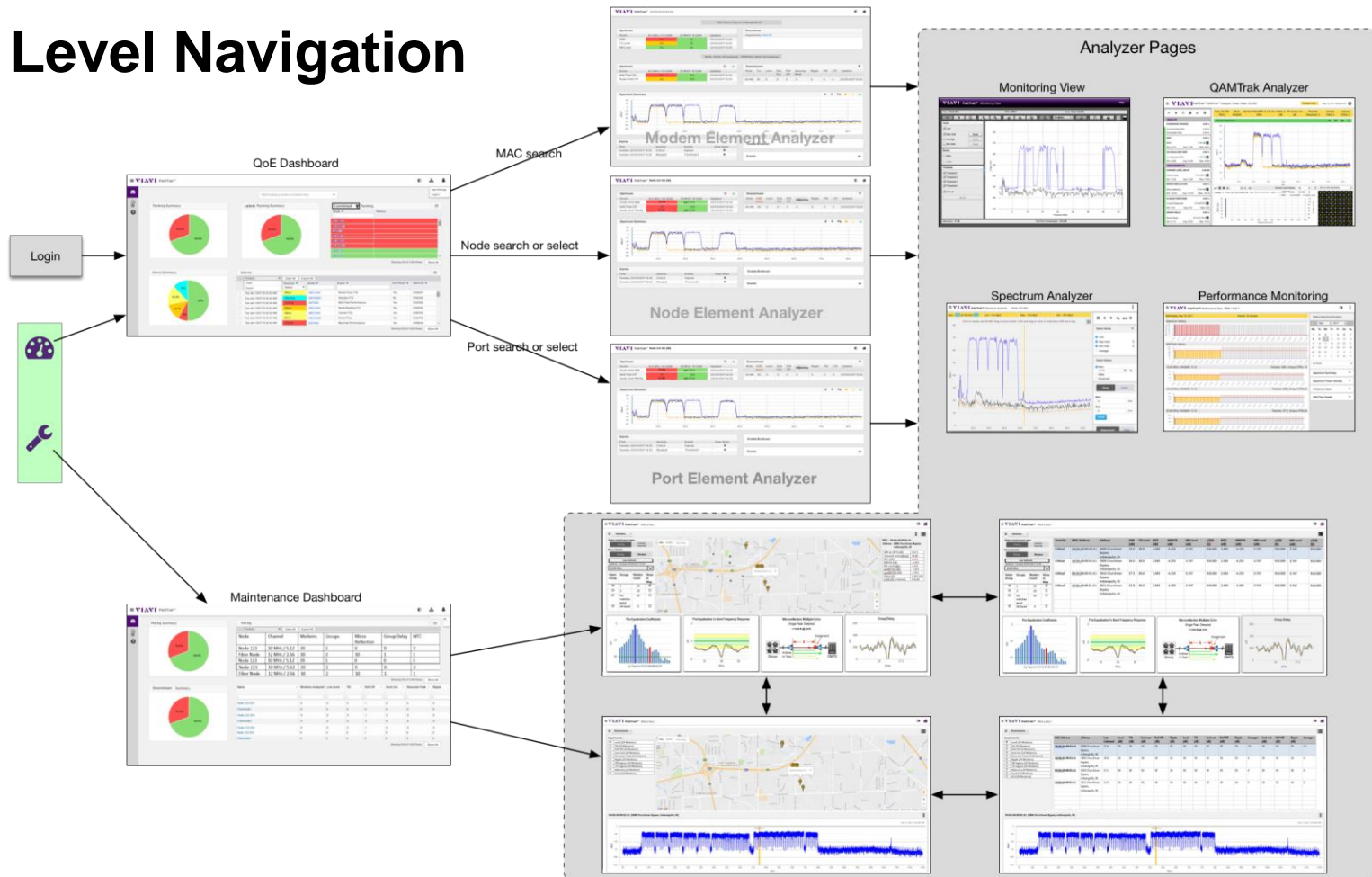
5 Monitoring View



6 PathTrak Spectrum



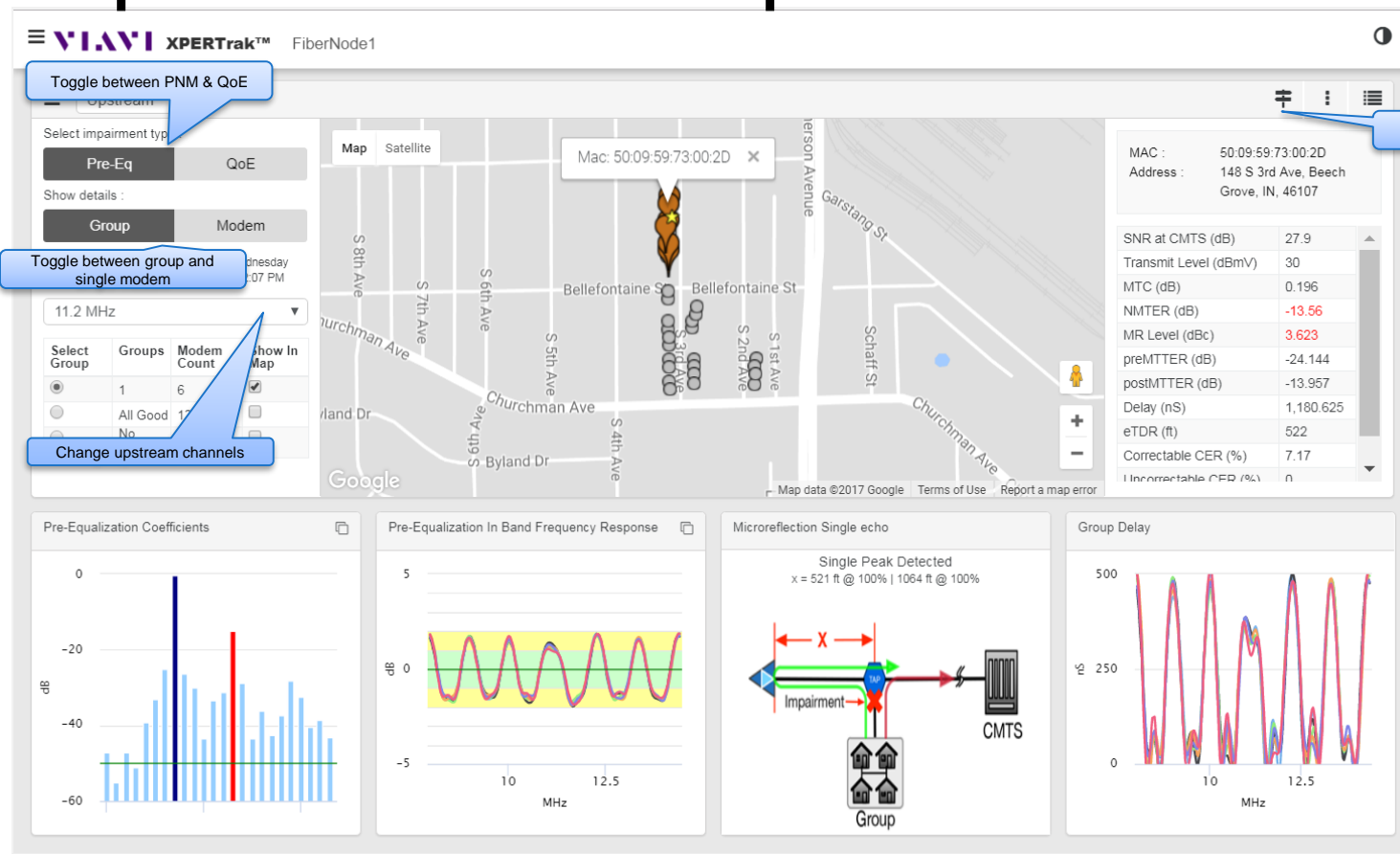
Top Level Navigation



See How They Work

- [QoE Dashboard](#)
- [Maintenance Dashboard](#)
- [Element Analysis](#)

Upstream PNM View Map



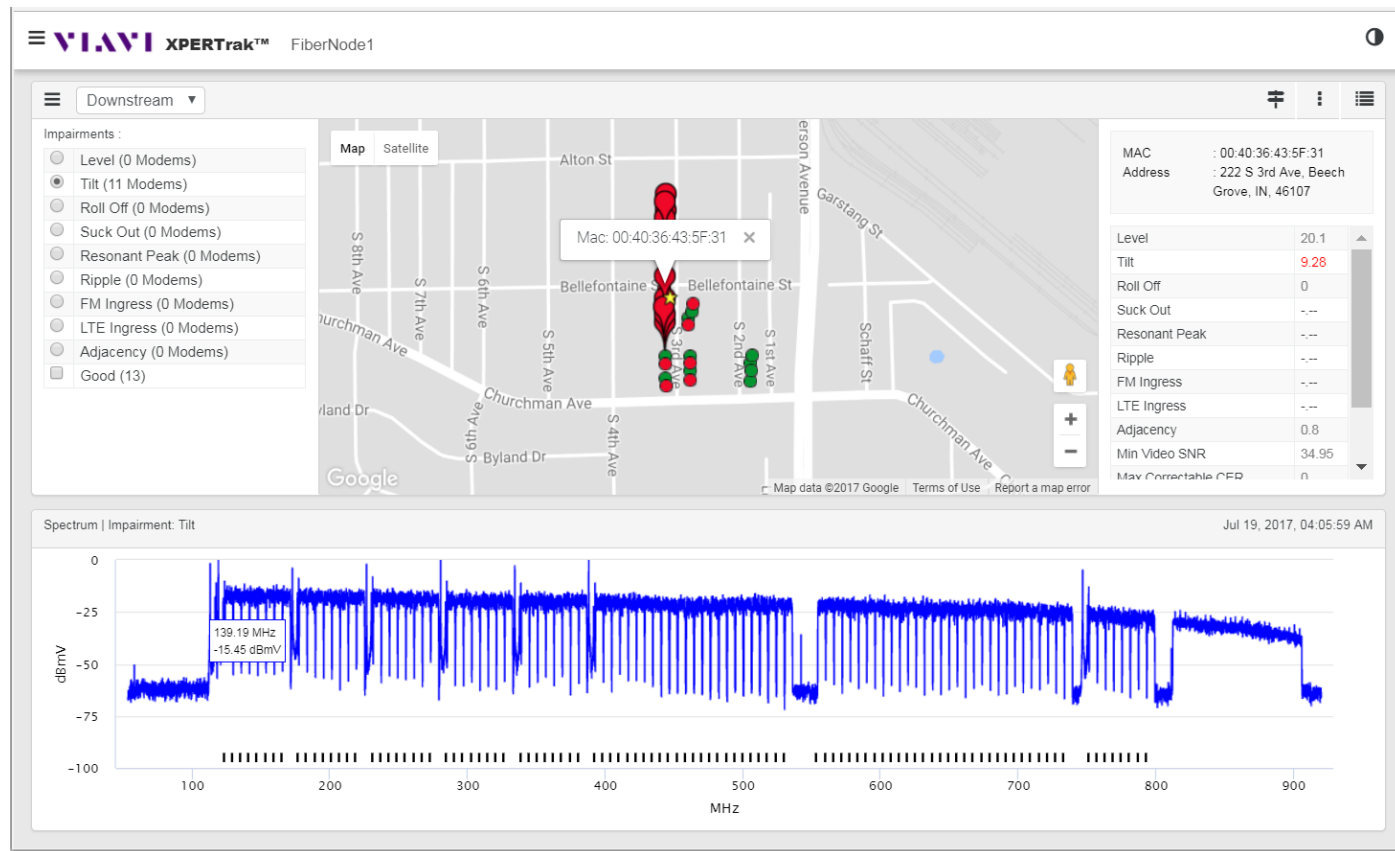
Toggle on plant maps

[Access PNM Pre-Eq Analysis](#)

[PNM Pre-Eq Analysis Details](#)

[PNM QoE Analysis](#)

Downstream PNM View Map



[XPERTrak](#)
[Downstream Monitor](#)

Some Things Stay The Same

- [Tech Page](#)
- [XPERTrak 1.0. The Evolution of PathTrak](#)

Where To Go For More Information

- [Viavi Support Knowledge Base](#)
- [Viavi Support Webpage](#)



VI.VI