

EchoLife Bridge GPON Terminal

Quick Start



Safety Information

Before using the device, read these precautions carefully. Follow these precautions and instructions to ensure optimal product performance and to avoid danger and legal or regulatory violations.

Fire-proof Precautions

- Keep the device away from fire or heat sources, including electric heaters, ovens, stoves, and candles. Otherwise, the shell of the device may become hot or melt, causing fire in extreme cases.
- Replace deteriorated cables or power socket components on the power supply line or near the device in a timely manner to eliminate safety risks.

Potentially Explosive Area

- Do not place or operate the device in an environment with that contains flammable or explosive gas or smoke.
- Do not place flammable or explosive materials below or above the meter cabinet.

General Safety Precautions

- Do not lead the strength member of the optical fiber or other metal parts indoors. Do not install telephone lines, network cables, power adapters or power adapter cables outdoors. These measures will help to prevent damage to the device and injury to people, which are especially possible during thunderstorms.
- If the power adapter is damaged from human factors, and the inside circuit is exposed, do not touch the exposed parts. Otherwise, security risks are present.
- Keep the device out of the reach of children. Components and accessories are small and could pose a choking risk.
- Looking directly at the optical port may injure your eyes.
- Do not use any power adapters that are not in the standard configuration. Otherwise, the device may be abnormal or unsafe.
- If a backup power unit (BBU) is available in the packing box, do not disassemble it, refit it, or put it in a fire. Otherwise, it may create a safety risk.

Instructions for Use

- Use the device in a clean and well-ventilated indoor environment, out of direct sunlight.
- Store devices and accessories in temperature -10°C to $+35^{\circ}\text{C}$ and relative humidity 30%–85% RH for at most 9 months. If the ambient temperature or relative humidity is overhigh or overflow, the device may be faulty.
- Install the device in strict compliance with the requirements of the supplier. Ensure there is at least 10 cm space surrounding the device for heat dissipation. During installation, keep the device away from flammable objects and electric appliances that generate strong magnetic or electric fields, including microwave ovens, refrigerators, and mobile phones.
- The described input voltage range should comply with the local power grid. For example, the input voltage of the device is 200–240 V AC for European Union; the input voltage of the device is 100–130 V AC for the United States of America.
- The power supply voltage of the device must meet the requirements on the input voltage of the device.
- Before use the power adapter, please check no damage on the adapter.
- Use dry hands to connect or disconnect cables. Stop using the device and switch off the power before connecting or disconnecting cables.
- When there is lightning, switch off the power and disconnect all cables, including the power cable, optical fiber, and network cable.
- Prevent objects from entering the device through the heat dissipation hole. Prevent water or other liquids from entering the device.

- Do not place any objects on the device, so that the device will not be overheated or deformed.
- If an abnormality occurs, for example, liquid enters the device, or the device emits smoke, unusual sounds, or odors, stop using the device immediately. Switch off its power, and disconnect all cables to the device, including the power cable, optical cable, and network cable.
- Before cleaning or maintaining the device, stop using it, close all Apps, and disconnect all cables.
- Do not use any strong chemicals, detergents, or other chemical agents. Use a clean, dry, soft cloth to wipe the shell and accessories of the device.
- Keep the device dry when it is stored, transported, or used. Prevent the device from colliding with other objects. Otherwise, the device and its accessories may be damaged, and the device may become faulty.
- No unauthorized unit or individual may disassemble or modify the device or accessories.
- Dispose of the packing materials, expired batteries, and old or abandoned devices in accordance with local laws and regulations. Recycling them is strongly recommended.

Product Overview

Product	Function
HG8010 series	■ 1 Ethernet port
HG8110 series	■ 1 Ethernet port ■ 1 POTS port
HG8012 series	■ 1 Ethernet port ■ 1 CATV port
HG8120 series	■ 2 Ethernet ports ■ 1 POTS port
HG8242 series	■ 4 Ethernet ports ■ 2 POTS ports ■ 1 CATV port
HG8040 series	■ 4 Ethernet ports
HG8240 series	■ 4 Ethernet ports ■ 2 POTS ports



NOTE

If some device types are not in the preceding list, refer to <http://www.huawei.com>.

Technical Specifications

- Power adapter input: 100–240 V AC, 50/60 Hz
- System power supply: See the nameplate on the device.
- Ambient temperature: 0°C to +40°C
- Ambient humidity: 5%–95% (non-condensing)

For other technical specifications, see the following table.

GPON Terminal	Weight (Including the Power Adapter)	Maximum System Power Consumption
HG8010 series	About 270 g	3.6 W
HG8110 series	About 300 g	5.5 W
HG8012 series	About 350 g	6 W
HG8120 series	About 350 g	5.5 W
HG8242 series	About 400 g	14 W
HG8040 series	About 400 g	7.5 W
HG8240 series	About 400 g	7.8 W



NOTE

If the appearance of the product in this document differs from the actual product, the actual product prevails.

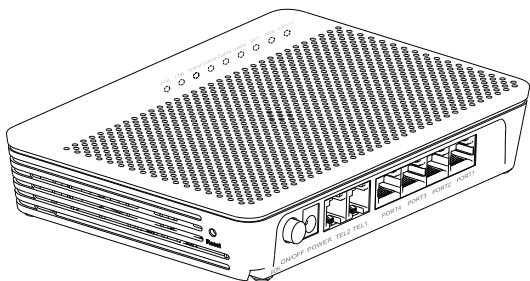
Installing the GPON Terminal

CAUTION

1. Do not install GPON terminals outdoors or on the outdoor cabinets.
2. GPON terminals can be mounted onto a wall or be placed on a workbench. Do not install GPON terminals in other modes, such as the ceiling.
3. The terminal cannot be connected to other devices such as GPON terminals, switch and router.

Mounting a GPON Terminal On The Desk

The schematic diagram for placing the device on a desk horizontally is as follows (The HG8240H5 is used as an example here.):

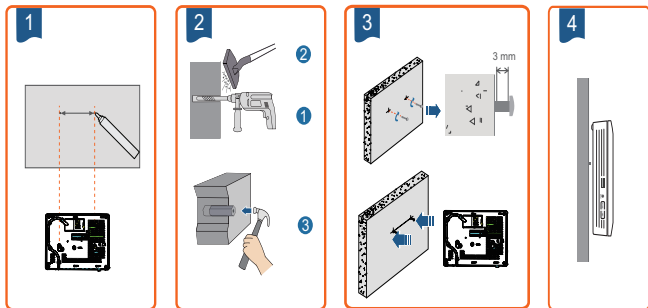


Mounting a GPON Terminal Onto The Wall

Step 1 Mark the positions of two holes used for mounting a GPON terminal, ensure that the two holes have the same spacing as the two mounting holes.

Step 2 Select a proper drill according to the outer diameter of the screws. Use a hammer drill to drill the marked positions on the wall. Then clean the wall and install two expansion bolts.

Step 3 Use a screwdriver to fasten the screws into the expansion bolts, leaving the heads of the screws 3 mm over the wall. Then install the GPON terminal to the screws.

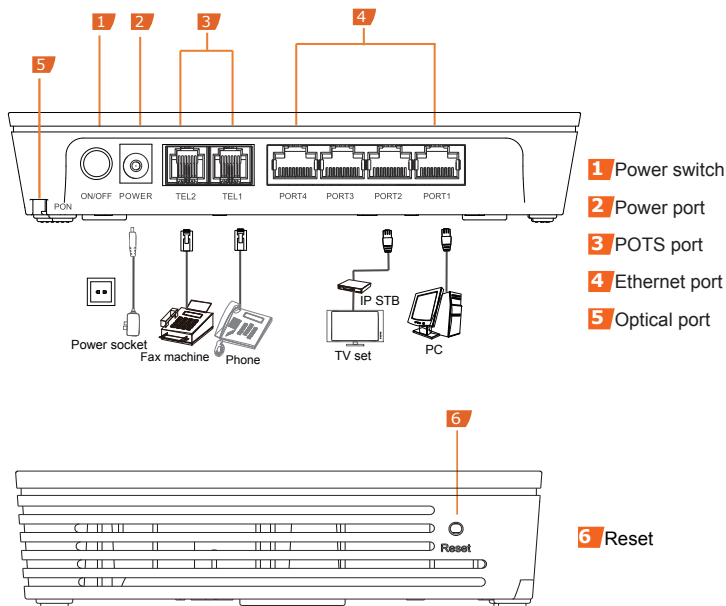


NOTE

This terminal is mainly placed horizontally on a desk. When it is mounted onto a wall, the silkscreen of its indicator is reversed. If you have a special requirement on the silkscreen, purchase another terminal.

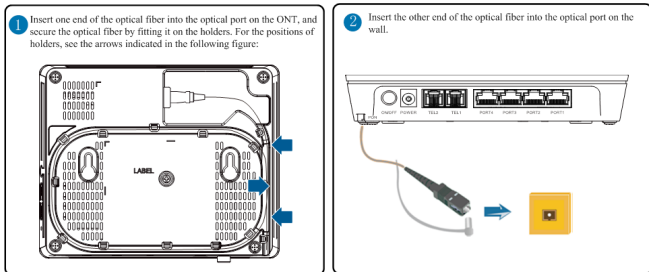
Connecting Cables

This document uses the HG8240H5 as an example to describe the connections. Ports on GPON terminals of other types may be different. Therefore, connect cables based on the ports that are actually supported by the device. If the external device is different from the device in the figure, refer to the description for connections of the external device.

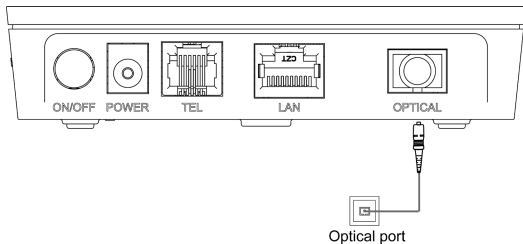


Step 1 Use an optical fiber to connect the optical port on the ONT and the optical port on the wall.

- The optical port of the HG8242 series, HG8240 series and HG8040 series are at the back of the device. For how to connect the optical port, see the following figure (The HG8240H5 is used as an example here.):



- For how to connect the optical ports of other ONTs, see the following figure:(Use an optical fiber to directly connect the OPTICAL port on the ONT to the optical port on the wall.) The HG8110F is used as an example here.



 **NOTE**

1. The optical connector connected to the **OPTICAL** port is an SC/APC connector, and the type of the optical connector connected to the optical port in the wall is determined by practical conditions.
2. To ensure normal use of fibers, make sure that the fiber bend radius is larger than 30 mm.

Step 2 Use a network cable to connect the **LAN** port to a PC or the Ethernet port on the IP STB.

Step 3 Use a phone line to connect the **TEL** port to a phone or fax machine.

Step 4 Use a power adapter to connect the **POWER** port to the power socket.

 **NOTE**

The preceding figure connects the power adapter as an example. For details about how to use the backup battery unit, see the usage guide to the backup battery.

Step 5 Press the **ON/OFF** power switch.

Logging in to the Web Configuration Window

Step 1 Set the IP address of the PC in the same subnet as the management IP address of the GPON terminal.

 **NOTE**

You can find the default management IP address on the nameplate of the device.

Step 2 Enter the management IP address of the GPON terminal in the address bar of Internet Explorer and press **Enter**.
The login window is displayed.

Step 3 In the login window, select your preferred language, enter the user name and password (printed on the nameplate of the device.), and click **Login**. After the password is authenticated, the Web configuration window is displayed.

 **NOTE**

- Shipped from different manufacture batches, the nameplates of some devices do not have the IP address, user name, and password printed. In such a case, log in to the device using 192.168.100.1 (or 192.168.1.1), root (user name), and adminHW (password).

- If you do not perform any operations after logging in to the system for five minutes, you will exit the system and the system automatically returns to the login interface.
- The system will be locked if you input incorrect user name and password three consecutive times. One minute later, it will be unlocked.
- Change the initial password after logging in to the web page.

Indicator Description

Table 1 Indicator status description 1

Indicator	Status	Description
CATV	Steady on	The CATV function is enabled and CATV signals are received.
	Off	The CATV function is disabled or CATV signals are not received.
TEL1–TEL2	Steady on	The ONT is registered with the softswitch but no service flows are transmitted.
	Blinking	Service flows are transmitted.
	Off	The ONT is not powered on or fails to be registered to the softswitch.
LAN1–LAN4	Steady on	The Ethernet connection is in the normal state.
	Blinking	Data is being transmitted on the Ethernet port.
	Off	The Ethernet connection is not set up.
LOS/PON	See Table 2.	
POWER	Steady green	The terminal is powered on.
	Off	The power supply is cut off.

Table 2 Indicator status description 2

Status No.	Status		Description
	PON	LOS	
1	Off	Off	The GPON terminal is prohibited by the upper-layer device, contact the service provider for help.
2	Blinks twice a second	Off	The GPON terminal attempts to set up a connection with its upper-layer device.
3	Steady on	Off	A connection is set up between the GPON terminal and its upper-layer device.
4	Off	Blinks once two seconds	The GPON terminal is not connected to optical fibers or does not receive optical signals.
5	Blinks twice a second	Blinks twice a second	The GPON terminal is a rogue terminal, contact the service provider for help.
6	Blinks once two seconds	Blinks once two seconds	The hardware is faulty.

Disposal and recycling information



The crossed-out wheeled-bin symbol on your product, literature or packaging reminds you that all electronic products must be taken to separate waste collection points at the end of their working lives; they must not be disposed of in the normal waste stream with household garbage. It is the responsibility of the user to dispose of the equipment using a designated collection point or service for separate recycling of waste electrical and electronic equipment (WEEE) according to local laws.

Proper collection and recycling of your equipment helps ensure electrical and electronic equipment (EEE) waste is recycled in a manner that conserves valuable materials and protects human health and the environment, improper handling, accidental breakage, damage, and/or improper recycling at the end of its life may be harmful for health and environment. For more information about where and how to drop off your EEE waste, please contact your local authorities, retailer or household waste disposal service.

Disposal of the device is subject to WEEE Directive Recast (Directive 2012/19/EU). The purpose of separating WEEE from other waste is to minimize the potential environmental impacts and human health risk of any hazardous substances that may be present.

Reduction of hazardous substances

This device is compliant with the REACH Regulation [Regulation (EC) No 1907/2006] and RoHS Directive Recast (Directive 2011/65/EU).

The **LOS** indicator blinks.

- If the LOS indicator blinks once two seconds, check whether the pigtail fiber is properly connected and the connector is clean.
- If the GPON terminal blinks twice a second, contact the service provider for help.

The **PON** indicator is off.

- Check whether the **OPTICAL** port and optical fiber is properly connected.
- The GPON terminal fails to register with the upper-layer device. Contact the service provider for help.

The phone does not ring upon an incoming call but communication is in normal state when the phone is in off-hook state.

- The GPON terminal provides a maximum of 60 V AC ringing current voltage. Check whether the ringing current voltage of the phone is higher than 60 V AC. If it is higher than 60 V AC, replace it with another phone.

How to reset the GPON terminal?

- Press **Reset** by using a needle-type object.

How can I restore factory defaults?

- Press **Reset** by using a needle-type object for longer than 10s to restore factory defaults and reset the GPON terminal. If the indicator is off and then is lit, the system restarts successfully.



Warranty Card

Thank you for choosing Huawei Technologies Co., Ltd. To get better services, please read this warranty card carefully, fill in the required information, and preserve this card in good condition.

User Information

Personal or
company's full name: _____

Address/Postal Code: _____

Telephone: _____

Email: _____

Product Type: _____

Product Serial Number: _____

Purchase Date: _____

Invoice Number: _____

Dealer's Name: _____

Dealer's Address: _____

Dealer's Telephone: _____

Preserve well. No reissue.

Dealer's Seal



Limited Warranty

Subject to the exclusions contained below, Huawei Technologies Co., Ltd. (Huawei for short) warrants its access terminals ("Products") to be free from defects in materials and workmanship under normal consumer usage for one year from the date of purchase of the product ("Warranty period"). During the warranty period, a Huawei authorized service partner shall remedy defects in materials and workmanship free of charge.

Special Notice:

1. The warranty card shall be applicable only after being stamped by the dealer.
2. The warranty card must be preserved in good condition and free of any scratch or alteration.
3. To claim such service for defects that are not included in the following exclusion terms, the warranty card and the invoice that records that product serial number shall be presented to a Huawei authorized service partner.

Exclusions:

In any of the following cases, the warranty card becomes unenforceable or inapplicable without prior notice:

1. The defects are caused by improper handling in transportation and assembly.
2. The defects are caused by the fact that the product is dismantled or altered by anyone that is not from a Huawei authorized service partner.
3. The defects are caused by the fact that the product is used in a harsh environment that is not suitable for the operation of the product.
4. The defects are caused by any force majeure including but not limited to fire, earthquake, lightning, and tsunami.
5. The defects are caused by the fact that the product is used or handled incorrectly, roughly or not as instructed in the applicable User Guide.
6. The normal wear and tear, including but not limited to the normal wear and tear of the shell and the power module, shall not be covered by the limited warranty.
7. The warranty card is altered or illegible, or the product serial number recorded on the warranty card is inconsistent with the actual one imprinted or labeled on the product.

In any case that is not covered by this limited warranty or should the warranty expire, Huawei shall charge for the service(s) claimed for the products if the product is still remediable. Huawei reserves all rights to interpret this limited warranty.



Huawei Technologies Co., Ltd.

Address: Huawei Industrial Base
Bantian, Longgang
Shenzhen 518129
People's Republic of China
Website: <http://www.huawei.com>





Copyright © Huawei Technologies Co., Ltd. 2018. All rights reserved.

No part of this document may be reproduced or transmitted in any form or by any means without prior written consent of Huawei Technologies Co., Ltd.

Trademarks and Permissions



and other Huawei trademarks are trademarks of Huawei Technologies Co., Ltd.

All other trademarks and trade names mentioned in this document are the property of their respective holders.

Notice

The information in this document is subject to change without notice. Unless otherwise stated, this guide serves only as a guide. All statements, information, and recommendations in this document do not constitute a warranty of any kind, expressed or implied.



Issue: 07
BOM number: 31505717