

# Locator Software CLEARPath™

ClearPath



## Description

Electroline's Locator software is a web-based application (accessible through Microsoft Internet Explorer) that offers an anywhere-anytime approach to ingress management. As part of the CLEARPath™ ingress management solution, Locator is the software within this product family that identifies the source of ingress and locates it within the cable network.

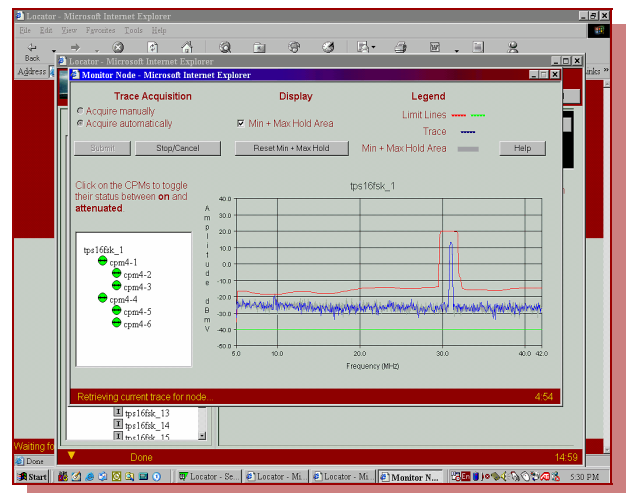
This user-friendly software allows multiple access to remotely monitor ingress in the return path via an Internet connection. Once logged on, the operator is able to check the performance of the return path.

Locator scans the fiber nodes within the cable network and reports any out-of-range events by displaying a top-level alarm condition for return path noise. It then provides a table of alarms and indicates the severity of the ingress. Notification of alarm conditions occurs via an optional pager. Each node has its own set of alarm parameters based on the normal operating conditions of the node. Customization of the node scanning function offers highly flexible control over which nodes are checked for noise, for how long, and how often.

Locator gives cable operators the ability to identify problem nodes and through the use of the CLEARPath modules (CPMs), it can locate the source of the ingress down to the smallest portion of the distribution plant. In addition, it can be a quick fix solution to ingress by using the features of the CPMs to temporarily prevent the noise from affecting other nodes.

## The Electroline Advantage

The Locator software is specifically designed to work as part of the CLEARPath Ingress Management Solution which is comprised of Test Point Selector (TPS) for remote monitoring of test points in a headend or hub, any spectrum analyzer or noise monitoring device, and CLEARPath ingress field locating modules (CPMs) for the monitoring and locating of ingress in a distribution plant. With this complete, end-to-end system, operators take on a pro-active approach to ingress management.

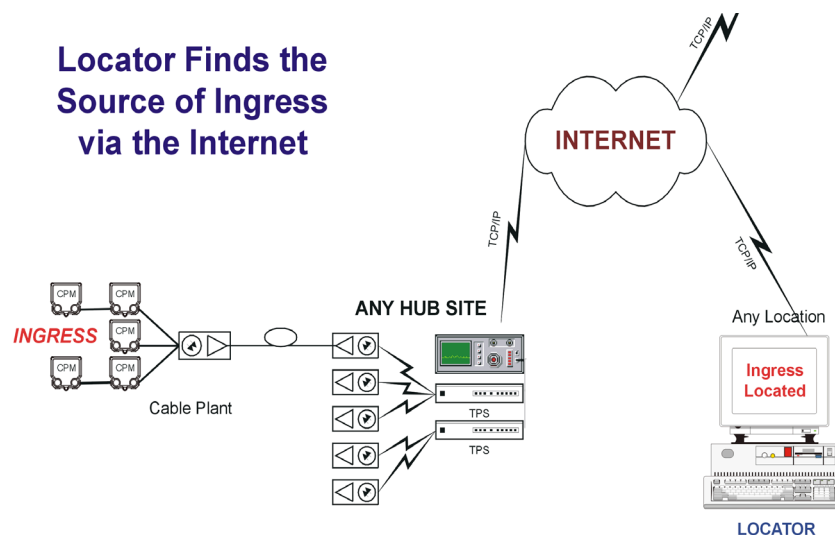


## Features

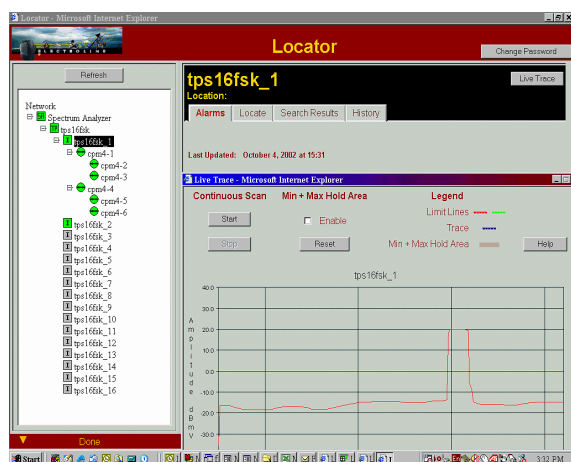
- Multi-user, web-based software available
- **Windows 7, 8 and 10 Compatible**
- Controls all CLEARPath equipment
- Provides a top level view of alarm conditions
- Locates ingress in the distribution plant
- Highly flexible control over node scanning strategies
- Offers automated ingress search in the cable network
- Provides live spectra views of individual nodes
- Stores statistical data and spectra displays on ingress events
- Sets up alarm conditions specific to each node

## Locator Software Deployment Configuration Diagram

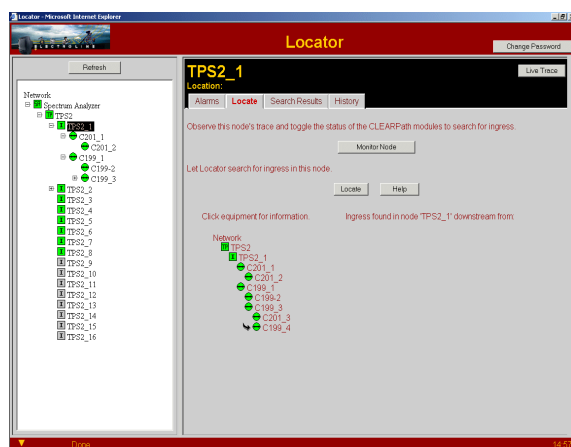
**Locator Finds the Source of Ingress via the Internet**



## Locator Software Screen Examples to Monitor, Detect, and Locate Ingress



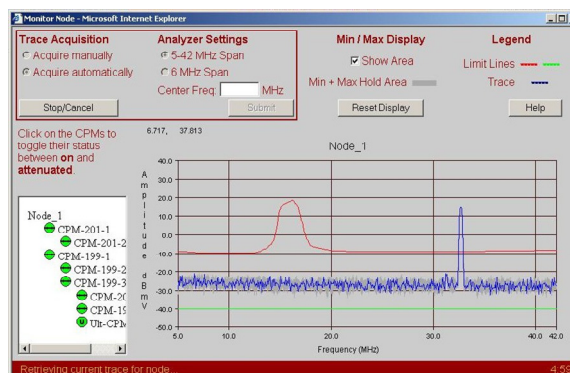
**Fig. 1**



**Fig. 2**

The main Locator screen (figure 1) shows the equipment configuration and a live trace of the selected node. Locator continually scans each node looking for out of range ingress events.

Once the predefined alarm condition is breached, an automated CPM ingress search is performed until the faulty segment is located. The search tool then displays the results of the automated search (figure 2). Another option is to manually switch each CPM looking for the location of the ingress (figure 3).



**Fig. 3**

For more information on our products, please visit: [www.electroline.com](http://www.electroline.com) or call: 800-461-3344