

- Tailored to Simplify Installation and Troubleshooting of RF Signals
- Intuitive Color Display with Simple Pass/Fail Indicators Reduce Installer Entry Errors and Improves Decision Making
- Autotests Streamline Certification
- Convenient Multiple Standard Tests in a Single Autotest App help to Standardize Tech Processes & Procedures
- Powerful Troubleshooting Tools Improve the Overall Health of the System
- Up to Six Hours of Operation from a Single Charge



An affordable entry-level testing solution for CATV field technicians & contractors

Overview

The 120 DSP™ signal level meter is the most cost-effective and dependable tool available for all of your basic CATV installation needs. This device features a compact rugged design, easy-to-use color user interface and an unparalleled selection of digital and analog channel measurements.

Autotest Apps

The 120 DSP streamlines your testing procedures while making installation and troubleshooting more efficient with the use of Autotest apps. These apps allow users to perform a Return Spectrum and Channel Plan Scan of the channels included in the selected channel plan. The results are then compared to a specific set of measurement limits and displayed with familiar color-coded Pass/Fail results. All of this can easily be accomplished just by simply pressing a single button.

Job Management

With the included Job manager, technicians have the ability to enter job information that can be attached to any test results. Notes can also be added directly to each job so the technician can report any faults, anomalies or job codes related to the work being performed.

Level Measurements

When testing or troubleshooting within your analog, digital or mixed analog/digital transmission system, the 120 DSP makes the perfect tool for measuring the power levels of all of your analog and digital QAM carriers.

Additionally, for QAM carriers (including deep interleave) the 120 DSP provides Constellation, Equalizer Tap, MER and BER measurement displays. This allows users to quickly analyze 64 and 256 QAM downstream channels for quality verifications or to locate impairments with the meter, all right out of the box.

Channel Plan Scan

With its channel plan scan feature, the 120 DSP can also display the frequency response of the entire channel lineup. This measurement displays a color-coded bar graph of each channel or your favorite channels in the active channel plan. The channel plan scan also includes on-screen markers that can be adjusted to perform a tilt measurement.

Spectrum Measurements

The 120 DSP comes standard with the ability to display the full return spectrum from 4 to 110 MHz. The spectrum display provides peak measurements, color-coded markers, and delta measurements. This feature also includes adjustable detector modes which are useful for capturing bursty transient noise. Optionally, the 120 DSP can also be equipped to perform forward spectrum measurements from 50 MHz to 1000 MHz.

innovative technology to keep you a *step ahead*

AVAILABLE MODELS:

- 120 DSP - US (6 MHz)
with 10/100 Mbps Ethernet
P/N 2011738XXX
- 120 DSP - EURO (6/8 MHz)
with 10/100 Mbps Ethernet
P/N 2011740XXX

OPTIONS:

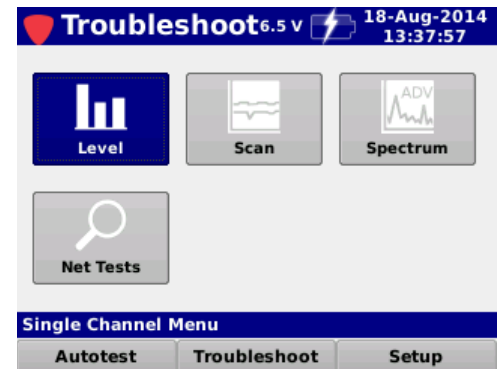
- Forward Spectrum Analysis (FSA)
P/N 0930207004
- Analog & Digital HUM
P/N 0930207005

The 120 DSP supports a variety of functions, including:

- User-Defined Tests
- Multi-language Support
- Create Work Orders Right on the Meter
- Interactive Basic RF Installation Process
- Flexible Data Storage & Setup

Simple Yet Powerful

Providing the widest range of functions for an installer available today (as standard options), the 120 DSP includes virtually all the testing options an installer or service technician needs to verify service quality and easily identify and fix problems in the field.



STANDARD TESTING FEATURES:

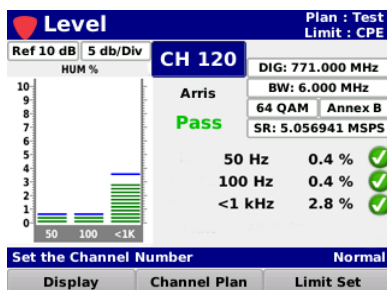
- Return Spectrum Analysis (4 to 110 MHz)
- Level Measurement
- C/N Measurement
- QAM Measurement (MER/BER/Constellation/EQ)
- Complete Channel Plan Scan with Tilt Measurement
- Network Test Suite with Ping, Traceroute, & Throughput Measurements

STANDARD INTERFACES:

- RF Test Port (F-Type)
- RJ45 Management Port (10/100 Mbps)
- Mini-USB Type B Female Charge & Data Port

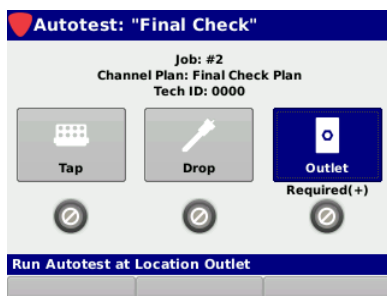
HUM Measurement

The HUM measurement function is used to troubleshoot interference that may result from a defective power supply or faulty or overloaded power inserters. This function enables the 120 DSP to measure the amplitude of the 50/60 Hz, 100/120 Hz, and low frequency interference (HUM) present on the video/QAM carrier of a single selected analog or digital channel.



User-Defined Autotests

A significant time and cost savings feature of the 120 DSP is the capability to group tests into automatic tests that can be executed with a single keystroke. Several Autotests can be stored in the meter and recalled as needed. These may include Level, Tilt, Spectrum, Hum, and Limit tests.



Limit Testing

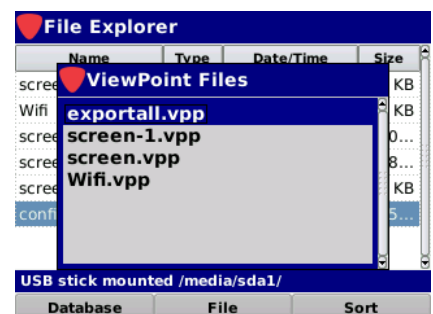
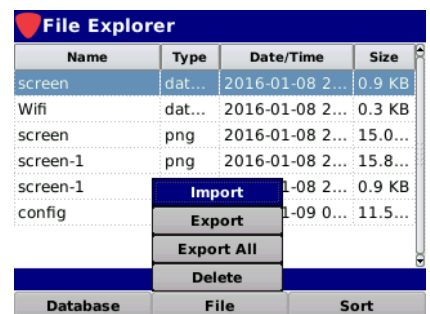
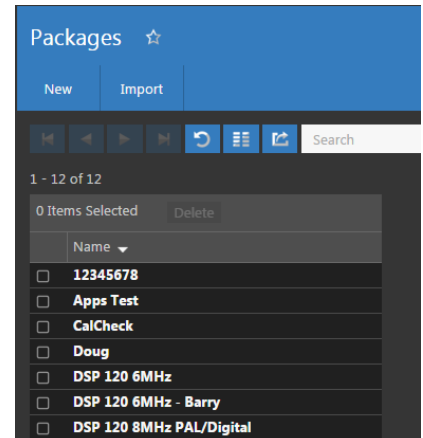
Limit test data allows for test uniformity and flexible field storage, and may be automatically scored against specified limits and assembled into reports.

Flexible Data Storage

The user can easily customize their 120 DSP with a virtually unlimited number of channel plans, limit sets, and jobs. This feature makes life much easier for technicians that work in multiple systems or areas that have differing channel lineups and testing requirements.

With Trilithic's complimentary ViewPoint Express PC software, you can quickly create setup files for the 120 DSP. These files can be packaged for easy transfer to one or all of your 120 DSP units simply using a standard USB flash drive.

The 120 DSP can also save measurement results and screen captures for Level, Channel Plan Scan, Return Spectrum, and Autotest measurements and these files can then be transferred to a standard USB flash drive for upload into the ViewPoint Express software for reporting, analysis, and printing (optional).

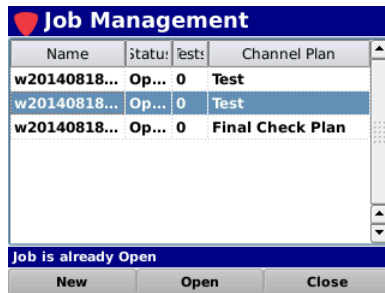


STANDARD FEATURES

The 120 DSP includes all of the following features standard.

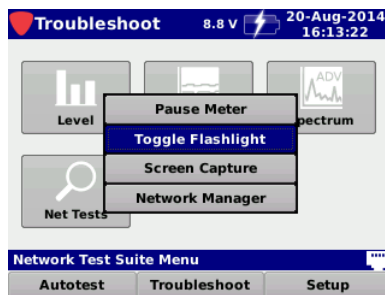
Job Management

- Create and close out your jobs from this screen
- Shows what channel plan and how many tests have been run on a particular job



LED Flashlight

- High intensity LED for working in dark spaces
- Control is provided through the Function menu for quick access from any screen

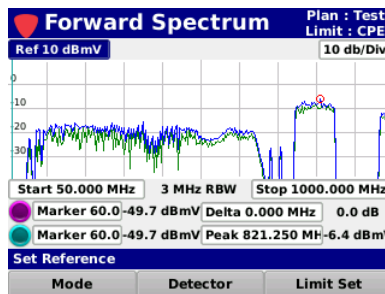


OPTIONAL FEATURES

The following optional features are available for the 120 DSP.

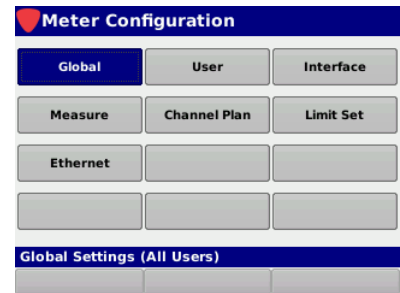
Forward Spectrum Measurement

- Provides the ability to view raw forward spectrum traces from 50 to 1000 MHz
- Fast DSP spectrum snapshots give the user extreme speed to capture fast transients on the downstream



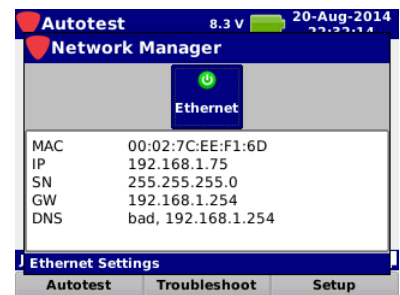
Easy Setup & Configuration

- Global configuration settings can be applied to all users of the device while other settings can be tailored to suit each user
- Setting adjustments can be locked out using the ViewPoint software



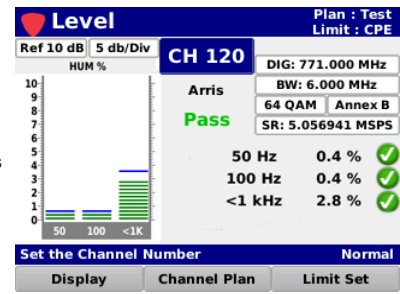
Simple Network Management

- Controls Ethernet connection
- Provides connection details such as MAC, IP, gateway and DNS



Analog & Digital HUM Measurement

- Measure the amplitude of 50/60 Hz, 100/120 Hz, and low frequency interference present on analog or digital channels
- Provides Pass/Fail results for limit sets

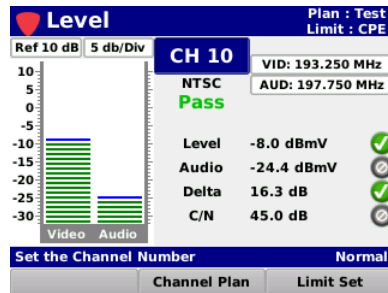


STANDARD MEASUREMENT FUNCTIONS

The 120 DSP includes all of the following measurement functions standard.

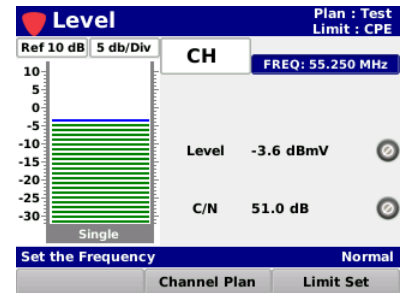
Analog Level Measurement

- Shows the analog channel and its associated measurements
- Provides Pass/Fail results for limit sets



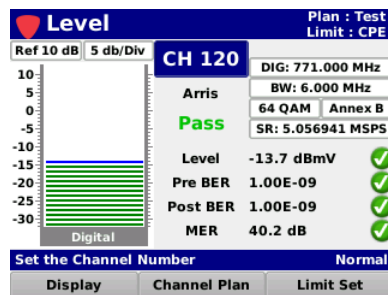
Single Frequency Level Measurement

- Shows the level of the analog carrier
- Displays the Carrier to Noise ratio of the analog carrier



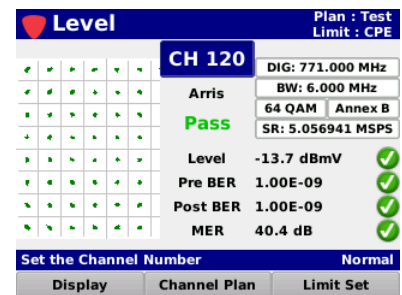
Digital Level Measurement

- Shows the level, MER and BER of a QAM channel
- Users can change the display to view BER over time, Equalizer Tap and Constellation



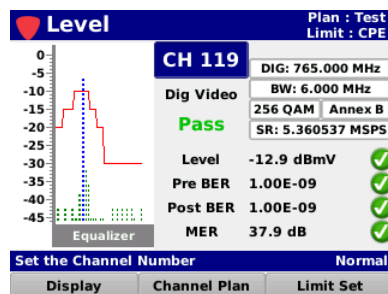
QAM Constellation

- Shows the constellation diagram of the specified QAM channel
- Shows the level, MER and BER and provides Pass/Fail results for limit sets



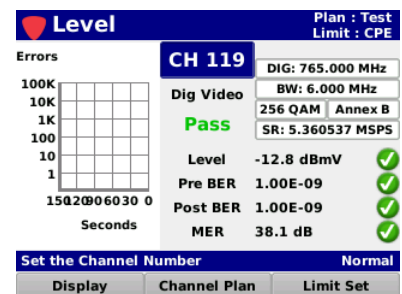
Equalizer Tap Display

- Displays the equalizer stress and whether the DOCSIS specification is being broken
- Shows the level, MER and BER and provides Pass/Fail results for limit sets



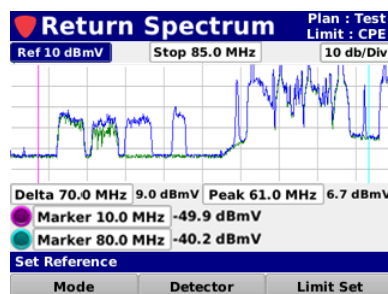
Bit-Error Rate Display

- Shows the BER on a graph with a 150 second measurement period
- Shows solid green lines for pre-errors and solid red lines for post-errors



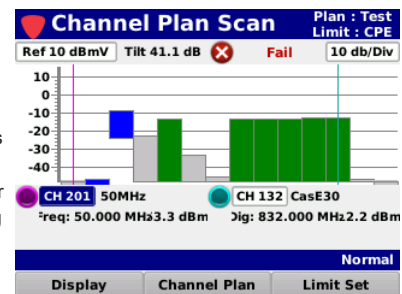
Return Spectrum Measurement

- Provides the ability to view raw return spectrum traces from 4 to 110 MHz
- Fast DSP spectrum snapshots give the user extreme speed to capture fast transients on the upstream



Scan & Tilt Measurement

- Full channel plan scan displays the frequency response of the entire channel lineup
- Provides Pass/Fail results for limit sets and color coded channels, green for digital and blue for analog



SPECIFICATIONS

Level Measurement

Channel Bandwidth	US Models: 6 MHz EURO Models: 8 MHz
Amplitude Range	-40 dBmV to +50 dBmV (20 to 120 dBμV)
Modulation Types	Analog: NTSC, PAL B/D/G/H/I/K/N & SECAM B/D/G/H/I/K/L Digital: 16/32/64/128/256 QAM Annex A, 64/256 QAM Annex, Annex C
Analog Measurement Accuracy	±0.75 dB @ 77 °F (25 °C) ±2.0 dB from 0 to 122 °F (-18 to 50 °C)
Digital Measurement Accuracy	±0.75 dB @ 77 °F (25 °C) ±2.5 dB from 0 to 122 °F (-18 to 50 °C)
Resolution	0.1 dB

Return Spectrum Measurement

Frequency Range	4 to 110 MHz
Resolution Bandwidth	300 kHz
Display Spans	4 to 42 MHz, 4 to 65 MHz, 4 to 85 MHz or 4 to 110 MHz
Display Scale	1, 2, 5, or 10 dB/division
Display Range	8 vertical divisions (when marker bar is hidden)
Spurious Free Dynamic Range	60 dB @ 25° C (77° F) (+50 dBmV)
Sensitivity	-30 dBmV (4 MHz to 110 MHz)

Digital Channel Measurement

Deep Interleave Compatibility	Yes
Downstream MER	40 ±2 dB @ +6 dBmV RF Input Level 34 ±2 dB @ -6 dBmV RF Input Level
Downstream BER	Method: True BER, derived from code words not from MER Standard: ITU J.83 annex A, B, C Range: 1 E-7 to 1 E-9 @ -6 dBmV RF Input Level
Symbol Rates	≥ 0.64 msps; ≤ 7.0 msps

Carrier-to-Noise Measurement (In-service, non-scrambled standard channels only)

Minimum Optimal Input Level for Full Dynamic Range	+10 dBmV (although not optimal, signals below this level can be measured)
Dynamic Range	50 dB
Resolution	< 0.5 dB

Tilt Measurement

Max Number of Carriers	10
High/Low Delta Resolution	0.1 dB
Scan	Video, audio, pilot, and digital carriers

SPECIFICATIONS FOR OPTIONAL FEATURES
Forward Spectrum Measurement

Frequency Range	50 to 1000 MHz
Resolution Bandwidth	10, 30, 100, and 300 kHz 1 and 3 MHz
Display Spans	User-selectable in 1 kHz steps
Display Scale	1, 2, 5, or 10 dB/division
Display Range	8 vertical divisions (when marker bar is hidden)
Spurious Free Dynamic Range	60 dB @ 25° C (77° F) (+50 dBmV)
Sensitivity	-40 dBmV (50 MHz to 1 GHz)

Analog & Digital HUM (In-service, non-scrambled standard channels only)

Minimum Input Level	0 dBmV
Range	0 to 5%
Resolution	0.1%
Accuracy	±0.5%

PHYSICAL & ENVIRONMENTAL SPECIFICATIONS

Physical Specifications

Construction	Rugged plastic housing
Control	Water resistant front panel solid membrane keypad
Display	Color LCD screen 320 x 240 pixels (approx 3.5" x 2.67")
Annunciators	Audible annunciator for key strokes
Flashlight	High intensity LED (0.25W)
Dimensions w/o Case (H x W x D)	7.00 x 4.50 x 1.75 in (20.32 x 13.97 x 5.08 cm)
Dimensions w/ Case (H x W x D)	8.00 x 5.50 x 2.75 in (22.86 x 16.51 x 7.62 cm)
Weight w/o Case	1.00 lbs (0.45 Kg)
Weight w/ Case	1.50 lbs (1.09 Kg)

Available Interface Types

RF Test Port	Replaceable F-Type connector
USB	Mini-USB 2.0 Type B female receptacle
Ethernet	RJ45 Ethernet Port (10/100 Mbps)

Battery & Power Specifications

Operating Time	6 hours, dependant on use
Charge Time	6 hours
Battery	Two 2600 mAh @ 3.7V Li-Ion internal battery, factory replaceable
Power Adapter Input	Type: 2-prong un-grounded male plug (NEMA 1-15p) Voltage: 100 to 240 VAC ~ 50 to 60 Hz Current: 0.3 A Max
International Power Adapters (Optional)	Type: Interchangeable clip-on, US adapter (included) Euro: CEE 7/16 Europlug, Type C UK: BS 546, Type D AUS: AS/NZS 3112
Power Adapter Output	Type: USB Type A female receptacle Voltage: 5 VDC Current: 1.0A
Data & Charge Cable	USB Type A male plug to Mini-USB Type B male plug

Environmental Specifications

Storage & Operating Temperature	-18° to +50° C (0° to 122° F)
--	-------------------------------

INCLUDES THE FOLLOWING:

120 DSP Meter
Protective Carrying Case with Belt Clip
Shoulder Strap
AC to DC Power Adapter & Battery Charger
USB Charge & Data Cable
(Mini-B Male to Standard-A Male)
USB Flash Drive Adapter
(Mini-B Male to Standard-A Female)

AVAILABLE SOFTWARE:

ViewPoint Express Configuration Software
for the 120 DSP
P/N 0930215000
ACTS™ Software
P/N 0930144000

OPTIONAL ACCESSORIES:

Precision RF Coaxial Test Cable (I/O-15)
P/N 2071527048
CL-9 Vehicle Power Adapter with USB cable
P/N 0610169007
CL-9 Vehicle Power Adapter without USB cable
P/N 0610169004
Mini-USB Power/Data Cable (I/O-20)
P/N 2071585004
Euro Power Adapter
P/N 0610169012
UK Power Adapter
P/N 0610169013
Australian Power Adapter
P/N 0610169014